



Scaling Action:

Opportunities for Food Waste Solution Providers to Engage with ReFED

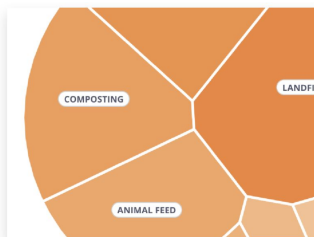
OCT 14 | 1:00PM ET

PARTNER WITH US



The ReFED Insights Engine is a data and solutions hub for food loss and waste, designed to provide anyone interested in food waste reduction with the information and insights they need to take meaningful action.

1



Understand the Problem

Find out how much food is being wasted in the US, learn why it's happening, and see where it goes.

[Visit the Food Waste Monitor](#)

2

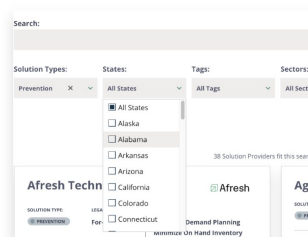


Explore Solutions

Learn which food waste reduction solutions are the most relevant and impactful for meeting specific goals.

[Visit the Solutions Database](#)

3

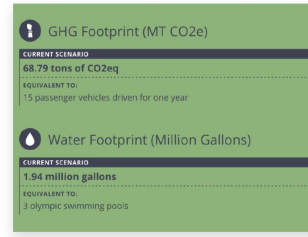


Find Solution Providers

Explore our database of 700+ organizations offering products and services to help you reduce food waste.

[Visit the Solution Provider Directory](#)

4



Calculate Impact

Quantify the climate, natural resource, and food security impacts of wasted food.

[Visit the Impact Calculator](#)

Launch the Insights Engine

The ReFED Team



Dana Gunders
Executive Director



Katy Franklin
Operations Director



Shawn Shepherd
Development Director



Alexandria Coari
VP, Capital, Innovation
& Engagement



Alejandro Enamorado
Capital, Innovation &
Engagement Manager



Angel Veza
Capital, Innovation &
Engagement Sr. Manager



Caroline Vance
Capital, Innovation &
Engagement Director



Dean Van Hollebeke
VP, Data & Insights



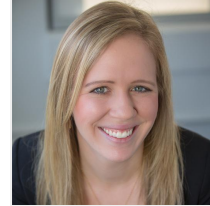
Selena Mao
Data & Insights Analyst



Jeffrey Costantino
Communications Director



Vanessa Mukhebi
Communications Manager



Jackie Suggitt
Capital, Innovation &
Engagement Director



Lily Herd
Capital, Innovation &
Engagement Manager



Sarah Munger
Capital, Innovation &
Engagement Analyst

1. Join the Solution Provider Directory

The screenshot displays the ReFED website interface. At the top, a navigation bar includes the ReFED logo and icons for 'INSIGHTS ENGINE', 'FOOD WASTE MONITOR', 'SOLUTIONS DATABASE', 'SOLUTION PROVIDER DIRECTORY', and 'IMPACT CALCULATOR'. The main heading is 'Find food waste solution providers', with a subtext: 'Search our database of 850+ organizations offering products and services to help you reduce food waste.' Below this is a search bar containing the text 'Manufacturing Byproduct Utilization'. A button labeled 'Apply here' is visible. The search results are filtered by 'Solution Types', 'States', 'Tags', 'Sectors', 'Legal Status', and 'Sort by'. The results show two entries: 'ReGrained' and 'RELEX SOLUTIONS'. A detailed view of 'ReGrained' is shown, including its logo, solution type ('PREVENTION'), legal status ('For-profit'), and a description: 'ReGrained is the leading food upcycling technology and ingredient partnership platform. We identify healthy food that is overlooked in the production process, and rescue it, in-line, using our patented technology to create delicious, versatile, better for you ingredients and our own branded products. Our initial commercial focus is the tens of billions of pounds of brewers' grain, which we upcycled into SuperGrain+, a premium, versatile, functional, and flavorful "flour".' A sidebar on the right provides additional information for 'ReGrained', including 'Annual Impact *' (Food Waste Diversion 200 Tons), 'Staff' (Employees: 5), 'Solutions Provided' (Manufacturing Byproduct Utilization (upcycling)), and buttons for 'Website' and 'Contact Solution Provider'.

A database of ~900 nonprofit and for-profit organizations ready to help implement food waste reduction initiatives.

Sample Use Cases:

- **Food Businesses** can find food waste solution providers that operate in their area.
- **Investors** can find solution providers that match their investment thesis.
- **Solution Providers** can communicate their environmental and social impact to potential clients and investors.

For any questions, please contact sarah.munger@refed.org

The Kroger Co. ZH | ZW Foundation and ViCap

Overview:

The Kroger Co. Zero Hunger | Zero Waste Foundation Innovation Fund, in collaboration with Village Capital, used ReFED tools to assess the market, identify potential opportunities, and standardize impact measurement for their 2021 \$2.5M open call.

Result:

Our tools provided critical comprehensive data and lists of solutions with their impacts, which helped identify the innovation area they wanted to focus on supporting and scaling: upcycling.

They used ReFED's Solution Provider Directory and our network of food system stakeholders to find solution providers to fund and accelerate.



2. Update Your Food Waste Solution Data



Food Waste Solution Data Update - Insights Engine Reporting Important Information

ReFED is surveying its growing network of food waste partners to fill a few remaining data gaps to better quantify the effectiveness of food waste reduction solutions and the associated costs and benefits of implementation. **We are asking you to complete this survey** to help ensure that solutions are accurately modeled and reflected in the next update of the ReFED Insights Engine. With more granular data and up-to-date information, the Insights Engine is a data and solutions hub designed to provide anyone interested in food waste reduction with the information they need to take meaningful action to address the problem.

Reporting this data enables ReFED to estimate impacts of implementing food waste reduction solutions; identify trends, growth areas, and gaps in food waste innovation; and help to drive development of the most efficient, scalable solutions while attracting new sources of capital to this dynamic space.

If you are a solution provider who is not currently part of the Solution Provider Directory, please complete a [sign-up form](#) before filling out this survey..

Providing data on the effectiveness of your solutions enables you and your organization with an opportunity to:

- Gain exposure to 2000+ weekly users of the Insights Engine, which include food businesses, investors, government representatives, and more
- Attract new sources of capital required to accomplish objectives and scale operations
- Enables ReFED and its network to better support you and the growth of your impact

Complete the survey to update your profile in the Solutions Provider Directory

Follow the link in the chat →



Drawdown Fund

Overview:

ReFED acted as strategic advisor and impact measurement expert for a **\$16M Series B funding round for Mori**, led by the Drawdown Fund.

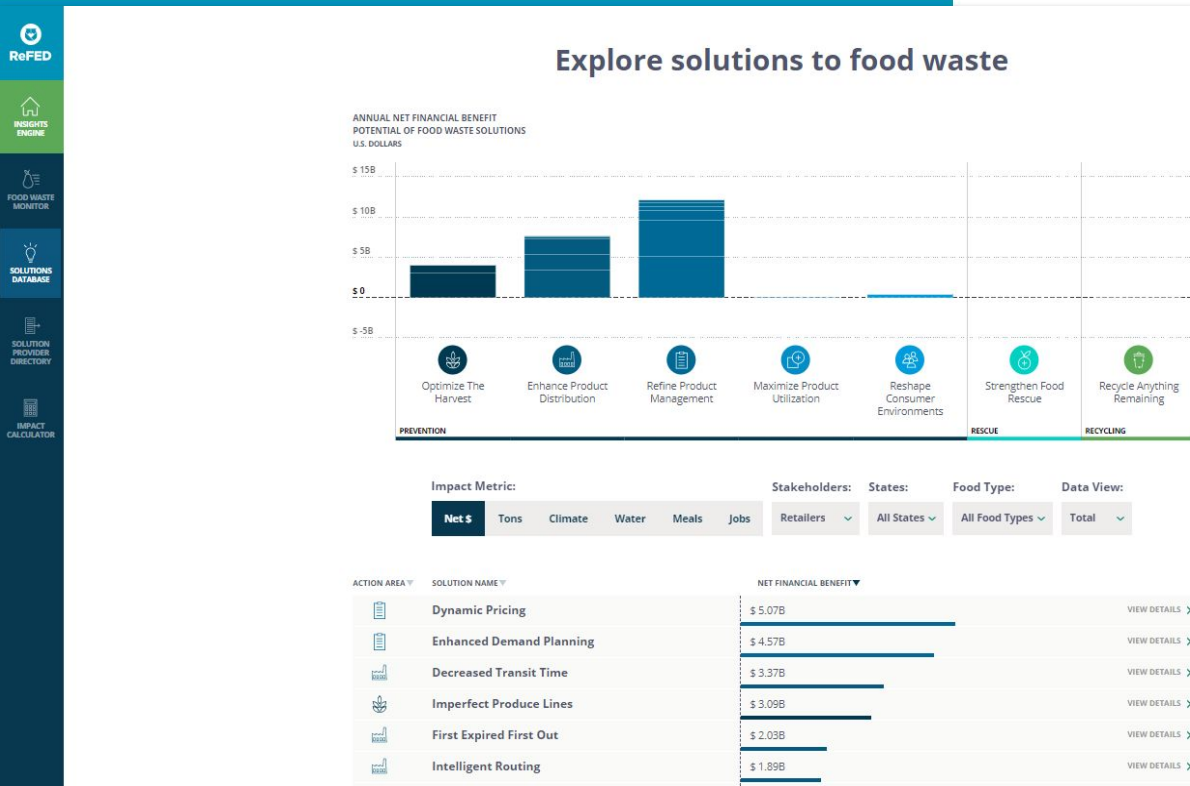
Drawdown and the other investors involved in the round used ReFED's Insights Engine's cost/benefit, market, and cause applicability data provided by solution providers in the shelf-life extension space to inform their diligence.

Result:

The funds are being used to accelerate commercialization into numerous categories and geographies, as well as to expand Mori's product development pipeline.

DRAWDOWN
FUND

Insights Engine: Solutions Database



A stakeholder-specific, comprehensive cost-benefit analysis of 40+ food waste reduction solutions based on impact goals (diversion potential, financial, environmental, etc.), plus detailed fact sheets on each.

Sample Use Cases:

- **Climate Funders** can determine the highest impact GHG solutions for specific regions.
- **State Agencies** can see what solutions will divert the greatest amount of food from landfills in their state.
- **Grocery Retailers** can estimate the profit potential of food waste solutions for their business and for their customers.

UNFI

Overview:

ReFED served as an advisor to UNFI to identify food waste innovators they could endorse as service providers to their grocery retailers.

Result:

ReFED presented solution types as measured by net financial impact and respective solution providers in our database that would be a good fit for their clients' needs.



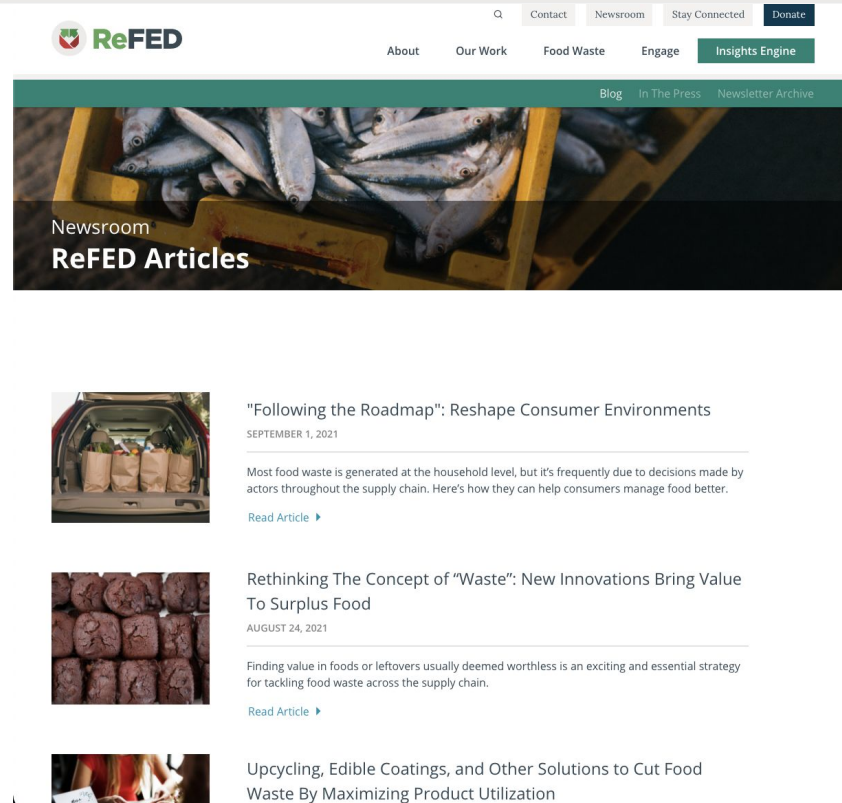
4. The ReFED Blog

What is the ReFED Blog?

The ReFED blog is our news hub for relevant content, such as highlighting donor profiles, breaking climate news, policy updates, ReFED announcements, and more.

We're now opening it up to guest blog posts showcasing the successful implementation of food waste solutions

Call to Action: Reach out to vanessa.mukhebi@refed.org if you're interested in being considered for a guest blog post.



The screenshot shows the ReFED website's Newsroom section. At the top, there is a navigation bar with links for "Contact", "Newsroom", "Stay Connected", and "Donate". Below this, a secondary navigation bar includes "About", "Our Work", "Food Waste", "Engage", and "Insights Engine". The main content area features a large image of fish in a yellow crate, with the text "Newsroom" and "ReFED Articles" overlaid. Below this, three article cards are displayed, each with a thumbnail image, a title, a date, a short summary, and a "Read Article" link.

Newsroom
ReFED Articles

"Following the Roadmap": Reshape Consumer Environments
SEPTEMBER 1, 2021
Most food waste is generated at the household level, but it's frequently due to decisions made by actors throughout the supply chain. Here's how they can help consumers manage food better.
[Read Article](#)

Rethinking The Concept of "Waste": New Innovations Bring Value To Surplus Food
AUGUST 24, 2021
Finding value in foods or leftovers usually deemed worthless is an exciting and essential strategy for tackling food waste across the supply chain.
[Read Article](#)

Upcycling, Edible Coatings, and Other Solutions to Cut Food Waste By Maximizing Product Utilization

5. Food Waste Funder Circle (FWFC)

What Is the Food Waste Funder Circle?

The FWFC is for private investors and public and philanthropic funders interested in using their capital to target food waste challenges as we work to mobilize capital in the space. Funders gain access to deal flow reports and pitch events showcasing solution providers seeking funding.

Call to Action:

- Fill out our funding survey to inform us of your ongoing funding needs.
- Email sarah.munger@refed.org if you're interested in pitching at a pitch event in the future



6. Food Waste Action Network (FWAN)

What Is the Food Waste Action Network?

The Food Waste Action Network (FWAN) is a network of individuals from across the food waste sector. The aim of FWAN is to facilitate collaboration and drive action across the food system through lunch 'n learn webinars, blogs and case studies, food waste events and opportunities, and networking events.

Call to Action:

- Sign up to join the network
- Attend our next event on **October 20th**: *Following the Roadmap to 2030: Strengthen Food Rescue*
- Reach out to lily.herd@refed.org if you'd like to be considered for a future speaking event



7. Summit: May 2022

What is the Food Waste Solutions Summit?

Our next summit will be in May, and is an opportunity to learn from thought leaders in the space, network with other solution providers, amplify your efforts, participate in panels and workshops, and host your own company events alongside.

Call to Action:

- Attend: May 10-12, 2022 (Minneapolis)
- Reach out to Jackie at jackie.suggitt@refed.org about potential speaking and sponsorship opportunities.

2022 Food Waste Solutions Summit

Presented by



May 10-12, 2022
Minneapolis, MN



8. The Climate Corps Food Waste Fellowship

What Is the Climate Corps Food Waste Fellowship?

ReFED has partnered with the Environmental Defense Fund (EDF) to launch the first-ever Climate Corps® Food Waste Fellowship in 2022, an exciting opportunity for a limited number of leading companies to have a dedicated, custom-matched, graduate student to help advance its food waste reduction and climate goals.



Call to Action:

Food waste solution providers are more than welcome to apply to be a host company and get the support of a ReFED-trained fellow. The application is currently live! The deadline to submit is February 1st.

Summary of Calls to Action

- Data & Insights** 1. Provide or update your data through our **data collection** survey
- Data & Insights** 2. Join our **Solution Provider Directory**
- Data & Insights** 3. Sign up to receive our **Capital & Innovation Monthly Update** newsletter
- Funding** 4. Inform us of your **funding needs** through our funding survey
- Networks + Events** 5. Join the **Food Waste Action Network**
- Networks + Events** 6. Attend our **2022 Food Waste Summit**
- Brand Awareness** 7. Reach out to be considered for a **guest blog post**
- Capacity Building** 8. Apply to be an **EDF Climate Corp Fellowship** host company

Thank you!

